

ED Series

CNC SINKING EDM FOR PRECISE MACHINING



ED400C-50N

 **EXCETEK**

ED Series CNC EDM Excelsior from



ED30C-50N

Compact with easy operation performance.

X/Y Travel	300 x 250 mm
Z Travel	300 mm
Work Table	650 x 350 mm
Max. Work piece	800 x 500 x 290 mm



Column Move Type CNC Die Sinking Electronic Discharge Machine

ED400C-50N

It is best seller in the production model, just enough size for medium mold.

X/Y Travel	400 x 300 mm
Z Travel	350 mm
Work Table	650 x 350 mm
Max. Work piece	1000 x 550 x 340 mm

ED600C-75N

The optimum size EDM it for all most mold.

X/Y Travel	600 x 450 mm
Z Travel	400 mm
Work Table	1000 x 600 mm
Max. Work piece	1450 x 890 x 470 mm



Column Move Type CNC Die Sinking Electronic Discharge Machine

ED800C-75N

Takes size and cost both into consideration.

X/Y Travel	800 x 600 mm
Z Travel	500 mm
Work Table	1200 x 700 mm
Max. Work piece	1600 x 1000 x 500 mm

ED1000C-75N

X/Y Travel	1000 x 600 mm
Z Travel	500 mm
Work Table	1250 x 750 mm
Max. Work piece	1800 x 1000 x 500 mm

ED1400C-100N

X/Y Travel	1400 x 700 mm
Z Travel	500 mm
Work Table	1700 x 950 mm
Max. Work piece	2100 x 1200 x 500 mm

ED1600C-100N

X/Y Travel	1600 x 750 mm
Z Travel	550 mm
Work Table	1850 x 1000 mm
Max. Work piece	2100 x 1200 x 500 mm

ED1800C-100N

X/Y Travel	1800 x 800 mm
Z Travel	600 mm
Work Table	1850 x 1000 mm
Max. Work piece	2500 x 1200 x 600 mm

ED2200C-100N

X/Y Travel	2200 x 1000 mm
Z Travel	600 mm
Work Table	2250 x 1100 mm
Max. Work piece	2700 x 1600 x 700 mm



CNC with Easy operation dialogue interface system

- **Plentiful of erosion data base:** Automatic generator the function of erosion condition, just input the electrode material, electrode size, erosion depth, can automatic generator of erosion condition accordingly.
- **Friendly operation:** With dialogue operation interface easy to understand.
- **X/Y axis use Ball screw:** to have easy transmission and accuracy.
- **Automatic parameter change:** Fast erosion to fine Finish erosion computer automatic calculator to generator best erosion condition to use, provide efficiency and accuracy to save the workng time.
- **Equal pulse power supplier:** When big electrode or depth erosion, computer can calculator of servo speed, special for accuracy and complete part machining.
- **Special function:** for copper, graphite, tungsten carbide circuit to improve the erosion speed and less electrode wear.
- **ARC & Short circuit Protection:** Automatic monitor of erosion status, when ARC or Short Circuit generator will detect GAP feedback signal auto reject of flushing status and adjust erosion frequency.
- **Safety Protection:** Auto Fire detection system \ ARC Protection \ Oil Level Detection provide safety security system.
- **X/Y Axes use Linear scale system.**

Mechanical Future

- Machinery construction use CAD computer analysis design system, and extend bad base \ saddle \ Vela to improve machining accuracy with heavy loading work piece.
- Work table use High frequency heat treatment to improve the surface hardness protection work table without abrasion.
- X/Y axis use High grade Class of ball screw to keep easy transmission and high accuracy.
- Machine casting use strong material and season cast iron to release of casting inner strain to keep machine body high rigidity without bending.
- Z-axis use Linear Guide Way to keep accuracy reliable and long life.
- Machinery construction according computer tensile strength \ resist compression \ stiffness strain.
- CNC model use Linear Guide Way.



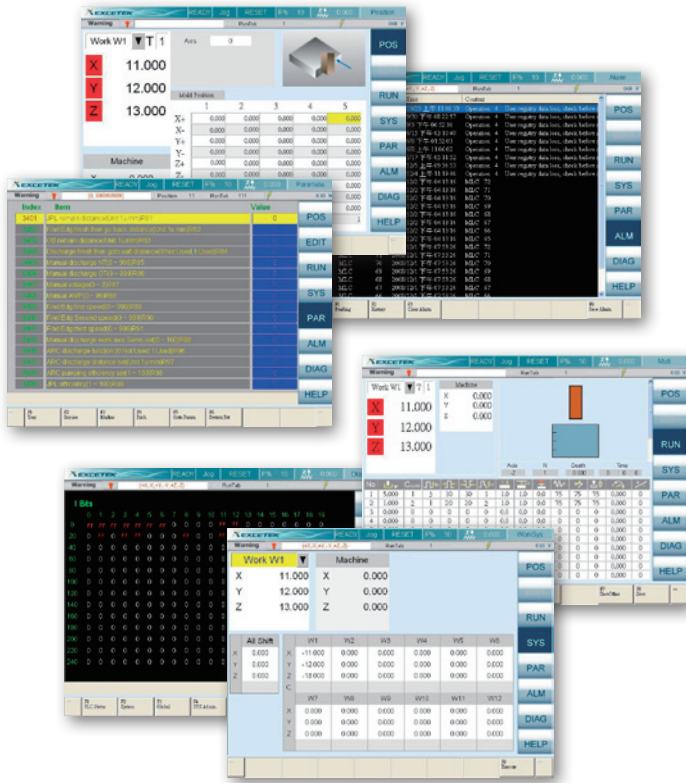
ED2200C-2H-100N-100N

X/Y Travel	1550 (775) x 1000 mm
Z Travel	600 mm
Work Table	2250 x 1100 mm
Max. Work piece	2700 x 1600 x 700 mm

ED3000C-2H-100N-100N

X/Y Travel	2550 (1275) x 1000 mm
Z Travel	600 mm
Work Table	3100 x 1100 mm
Max. Work piece	3700 x 1600 x 700 mm

Generator Future



Superior Erosion Function

EXCETEK of EDM create all by oneself MOSFET sparking circuit, with less electrode wear and fast erosion speed, can achieve mirror erosion with smooth surface roughness easy for polish.

Simple Maintenance

EXCETEK EDM Generator use front and back assembly module design, function of circuit indicate clear, each circuit have fuse protection, easy for check maintenance and exchange PCB, provide user simple easy and speedy service quality.

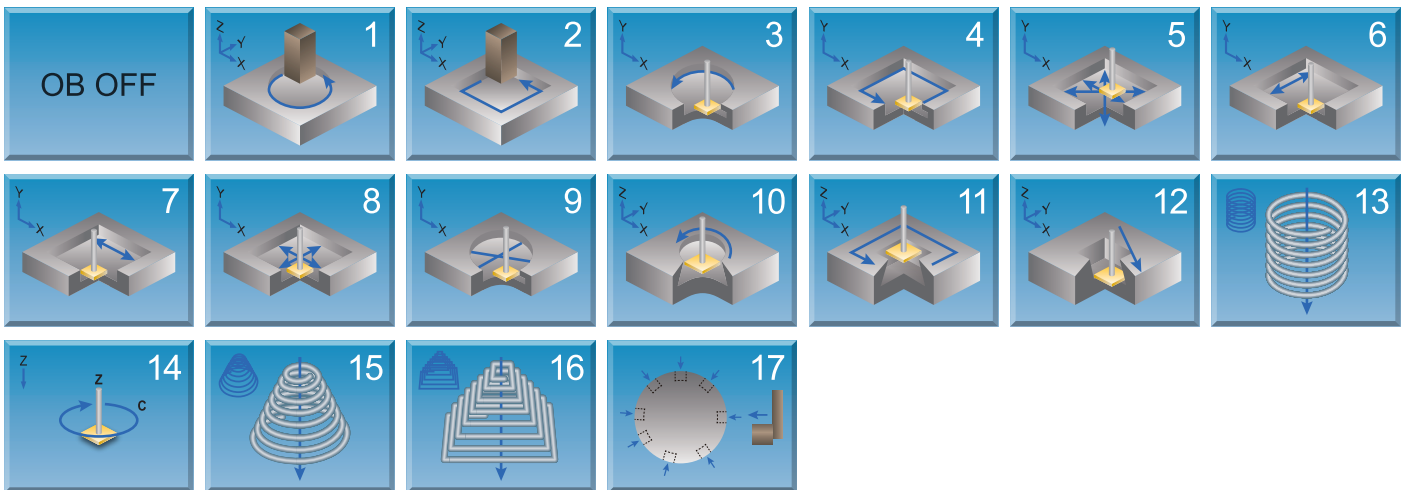
Stable Generator with performance

Front and back separate double heat flow system, hot component and cold circuit separate, electronic component adequately heat sink to improve generator working stable, nearly zero maintenance.

Perfect of after sale service quality

EXCETEK of EDM provide full range of after sales service system, include Operation \ Training \ Maintenance \ Application, According vanguard of professional management technology, to provide service quality and customer fear of disturbance in the rear after sales service support.

OB-Mode



Standard Accessories

1. Alcohol extinguisher
2. Working Lamp
3. Leveling pad
4. Flushing unit
5. Paper Filter
6. 1/2 Drill chuck
7. Tools Box
8. Clamp jiq

Option Accessories

1. Oil cooling system
2. Permanent magnetic pedestal
3. Tungsten carbide sparking circuit

C Type Specifications

MACHINE MODEL		ED30C	ED400C	ED600C	ED800C	ED1000C
X/Y Travel	mm	300 x 250	400 x 300	600 x 450	800 x 600	1000 x 600
Z Travel	mm	300	350	400	500	500
Work Table	mm	650 x 350	650 x 350	1000 x 600	1200 x 700	1250 x 750
Max. Work Piece size	mm	800 x 500 x 300	1000 x 550 x 340	1450 x 890 x 470	1600 x 1000 x 500	1800 x 1000 x 500
Max. Work Piece Weight	kg	550	1000	3000	4000	4500
Max. Electrode Weight	kg	120	100	250	350	350
Machine Weight	kg	1150	1600	3900	5000	5500
Outside Dimensions (Machine body+Travel+Tank+Generator)	mm	3050 x 1380 x 2090	1950 x 2160 x 2300	2110 x 2580 x 2575	3260 x 3320 x 3200	3450 x 3320 x 3200
Electrode Head to Work	Table Distance	270 ~ 550	55 ~ 415	300 ~ 700	420 ~ 920	420 ~ 920
OIL FILTER TANK						
Tank Capacity	l	350	450	1200	1500	1700
Tank Weight	kgs	-	-	350	450	500
Paper Filter		2	2	4	4	4
Outside Dimensions	mm	Built-in	Built-in	2020 x 530 x 1060	2200 x 1400 x 580	2300 x 1400 x 580

■ The content of this catalogue is subject to be change by the factory

Column Move Type Specifications

MACHINE MODEL		ED1400C	ED1600C	ED1800C	ED2200C	ED2200C-2H	ED3000C-2H
X/Y Travel	mm	1400 x 700	1600 x 750	1800 x 800	2200 x 1000	1550 (775) x 1000	2550 (1275) x 400
Z Travel	mm	500	550	600	600	600	600
Work Table	mm	1700 x 950	1850 x 1000	1850 x 1000	2250 x 1100	2250 x 1100	3100 x 1100
Max. Work Piece size	mm	2100 x 1200 x 500	2100 x 1200 x 500	2500 x 1200 x 600	2700 x 1600 x 700	2700 x 1600 x 700	3700 x 1600 x 700
Max. Work Piece Weight	kg	6000	6000	7000	9500	10000	16000
Max. Electrode Weight	kg	450	450	500	500	500	500
Machine Weight	kg	8000	8500	9000	13500	15000	21000
Outside Dimensions (Machine body+Travel+Tank+Generator)	mm	3700 x 3930 x 3260	3740 x 3930 x 3260	3750 x 3930 x 3260	4000 x 4600 x 3960	5350 x 4610 x 3960	6500 x 4610 x 3700
Electrode Head to Work	Table Distance	550 ~ 1050	500 ~ 1050	450 ~ 1050	660 ~ 1260	760 ~ 1360	760 ~ 1360
OIL FILTER TANK							
Tank Capacity	l	2200	2600	3000	4000	5000	6500
Tank Weight	kgs	600	700	750	950	1050	1150
Paper Filter		8	8	8	8	8	8
Outside Dimensions	mm	2600 x 1600 x 580	3000 x 1580 x 640	3050 x 1650 x 640	3300 x 1800 x 780	3700 x 1850 x 780	4700 x 1850 x 780

■ The content of this catalogue is subject to be change by the factory

Generator Specifications

MACHINE MODEL		50N	75N	100N	150N	200N	300N
Max. Erosion Current.		50A	75A	100A	150A	200A	300A
Max. Stock Remove Rate.	mm ³ /min	400	600	800	1100	1400	1700
Max. Power Input.	KVA	4.5	6	8	12	14	20
Max. Electrode wear.		0.2 %	0.3 %	0.4 %	0.4 %	0.5 %	0.5 %
Best of surface Roughness		0.20	0.30	0.50	0.70	0.70	0.70
Generator Weight	kg	200	300	330	330+300	330+300	330+300+300
Packing Dimension (LxWxH)	mm	610 x 610 x 1885	610 x 610 x 1885	610 x 610 x 1885	(610 x 610 x 1885) x 2	(610 x 610 x 1885) x 2	(610 x 610 x 1885) x 3



EXCETEK TECHNOLOGIES CO., LTD.



Dealer :

No.10, Fenggong 3rd Rd., Shengang Dist., Taichung City 42942, Taiwan

Tel: +886-4-2520 0688 Fax: +886-4-2520 0111

http: //www.excetek.com

e-mail: info@excetek.com.tw